

Welcome Supporters

Island View Orientation 2020



to Housing & Residential Education!



*FEATURING FOUR
BEAUTIFUL VILLAGES*





Dr. Cindy Derrico
Associate Vice President
for Student Affairs



Dr. Gary C. Gordon, II
Director of Residential
Education

HRE LEADERSHIP



Rachel Tafoya
Interim Director of
Housing Services &
Operations



Housing Team



Venessa Griffith
Coordinator of
Residential Education



Zoie Woishnis-Gilman
Residential Education
Operations Assistant



Tanya Yancheson
Interim Lead Coordinator of
Conference Services &
Marketing Initiatives



Laurita Franklin
Operations Analyst



Madison Malear
HRE Facility Coordinator



Diana Venegas
Occupancy Clerk



Daniel Stewart
HRE Information Technology
Consultant



Britney Huard
Occupancy & Budget
Analyst



Cassandra Silic
Assistant to the Executive
Director of HRE



Izzy Wroblewski
ACRE Anacapa & Santa
Cruz Villages

Why Living On Campus is Amazing

1. Location
 2. Academic support & resources
 3. Safety
 4. Walking distance to classes
 5. Meet new people & expand your social network
 6. Getting involved & building leadership skills
 7. Lonnie!
 8. Learn new things about yourself and others
-



Living-Learning Communities (LLC)

❖ **Bedford and Dr. Irene Pinkard Multicultural LLC-** *added in by staff, apply today!*

❖ Required to enroll in UNIV 150 and COMM 101

❖ **Michele Serros Multicultural LLC-** *lots of room*

❖ Required to enroll in CHS 100 Chicanas/os and UNIV 150

❖ **Outdoor Adventure Community Engagement LLC-** *lots of room*

❖ LLC students are required to enroll in UNIV 150 & ESRM 100

❖ **Student Undergraduate Research Fellows (SURF) Integrative LLC-** *limited spaces left*

❖ Required to enroll in UNIV 150, English Composition, and Introduction to Interdisciplinary Research

❖ **Windows on the World (WOW) International LLC** - *lots of room*

❖ Required to enroll in UNIV 150 and ENGL 101



First-Year Communities



Priority deadline: June 8

- You can still apply for open communities.

Living-Learning Communities (LLC)

How to Apply

- ❖ Indicate the living learning communities of interest on your housing application.
- ❖ Complete the supplemental application online A.S.A.P.
- ❖ Many students have already been notified of their acceptance in the LLCs.
- ❖ We will continue accepting applications until communities are full.



July 1st is the deadline to edit!

* Changes to the housing application (e.g. roommates requests) are due*

ve you, your roommate, and suitemates the opportunity to discuss your personal living style and
 rights of each individual resident are respected. Learning to accept each other's differences
 is an invaluable part of your learning experience in housing. As you discuss this contract and
 it is that is reasonable, and it is agreeable to all parties, please keep in mind that at no time are you
 Housing and Residential Education Community Living Standards, currently available at
<https://www.csuci.edu/residenthandbook.pdf>

me together at the beginning of each semester to discuss, review, and/or edit each contract
 to the suite/room. All residents are required to complete a new contract. Please save the time to
 act as honestly and specifically as possible. Dedicating adequate time to these questions will
 ure conflicts.

CI Resident Handbook Community Living Standards, Housing and Residential Education expects
 relationship with your roommates:
 Community Living Standards.

to read, study, and sleep free from unjustified interference. Keep noise to a minimum to respect
 around you.

ts in the room. Both you and your guests must respect the rights of your roommate and
 he rights and comfort of all residents/roommates must be considered when inviting guests into
 during the day. **A resident's request for any guest to leave, regardless of the guest's**
 id.

roommates to keep their apartment/suite/room clean and sanitary throughout their occupancy.
 be cleaned to maintain sanitary conditions.

belongings) and the personal privacy of others.
 Your Resident Advisor (RA), Coordinator of Residential Education (CRE), Assistant
 Education (ACRE), or Graduate Assistant (GSA) are willing to assist you in resolving conflicts.
 Conflict Resolution tips refer to pg. 46 in the CI Resident Handbook.

physical and/or any other type of harassment is prohibited. Harassment includes physical, verbal
 threats, intimidation, coercion and/or any other conduct, which threatens, alarms, degrades, or
 eys of any person.

assist you in resolving problems, it is your responsibility to actively participate in the solution.

uite to set a common time when all suitemates are able to meet and provide their

at _____ am or pm. Where:

required that all suitemates voices are heard and that all requests are validated.

hat are healthy ways to compromise?"; "What is the best way to advocate for

reement, sign the contract, give it to your RA, and he or she will take it and

refrigerator or in a visible place where all suitemates can access it.

your contract.

The Do's & Don'ts

*The contract must be co...

DO

- Actively listen
- Respectfully share opinions
- Respect preferences, needs, i...
- Be from your own
- Be honest now rather than la...

Village Name

Roommate #1: (Space _____):

Roommate #2: (Space _____):

Roommate #3: (Space _____):

Roommate #4: (Space _____):

Roommate #5: (Space _____):

Roommate #6: (Space _____):

Please

Guest Policy

Each resident is allowed 8 overnight gu...
 however, all created guidelines must b...
 frequency (each guest can only stay 2...
 bathroom and shower use, sleeping...
 to ensure your additional guidelines:

Day Time Visitors

Things to consider: ev...
 occupancy policy in th...

HRE Educational Philosophy

We are committed to:

- ❖ Placing students at the center of their educational experience by facilitating holistic growth
- ❖ Supporting personal and community responsibility development
- ❖ Diversity, equity, and civility
- ❖ Learning through problem solving and conflict resolution
- ❖ Providing facilities that support student learning



Safety Features

- ❖ CSUCI ranked 9th-safest campus in the country (CollegeStats.org)
- ❖ Live-in RAs and professional staff provide 24/7 duty coverage
- ❖ CARE Team and 24/7 phone or in-person counseling
- ❖ Location
- ❖ Facility access
- ❖ University Police
- ❖ Community Living Standards
- ❖ CI Alert Notifications



Need Help Now?

If you would like to speak to a clinician immediately, please call CAPS at 805-437-2088. If you reach the voicemail, select option 2 to access 24/7 phone counseling.

[Get Help »](#)



Alert Settings

Manage your emergency notification & special alerts settings



Policies & Procedures

Conduct Process: rights & responsibilities

- ❖ Conduct process to enforce Community Living Standards (CLS) and the Student Conduct Code
- ❖ Housing and University status are proportionate to the level of severity/disruption to the residential community
- ❖ Severity of Housing and University status may increase with each incident
- ❖ Repeated violations may result in removal from student housing, which carries a minimum two-month rent penalty, and possible University sanctions



Refer to Resident Handbook:

<https://www.csuci.edu/housing/residenthandbook.htm>



ALCOHOL EDUCATION PROGRAM
HOUSING & RESIDENTIAL EDUCATION
Designated Consumption Zone Plaque

CSU Smoke & Tobacco Policy

- ❖ In Fall 2017, all CSU campuses became smoke & tobacco FREE. The following is PROHIBITED anywhere on campus:
 - ❖ Use of any kind of smoke-emitting products (i.e. cigarettes, pipes, hookahs, cigars, etc.)
 - ❖ E-cigarettes, vapor products, “vaping”
 - ❖ Essentially, anything that looks or gives the effects of smoking
- ❖ Tobacco and nicotine use in any form (except FDA approved smoking-cessation products when used for this purpose)
 - ❖ Smoking-cessation products and information available at CI Student Health Services



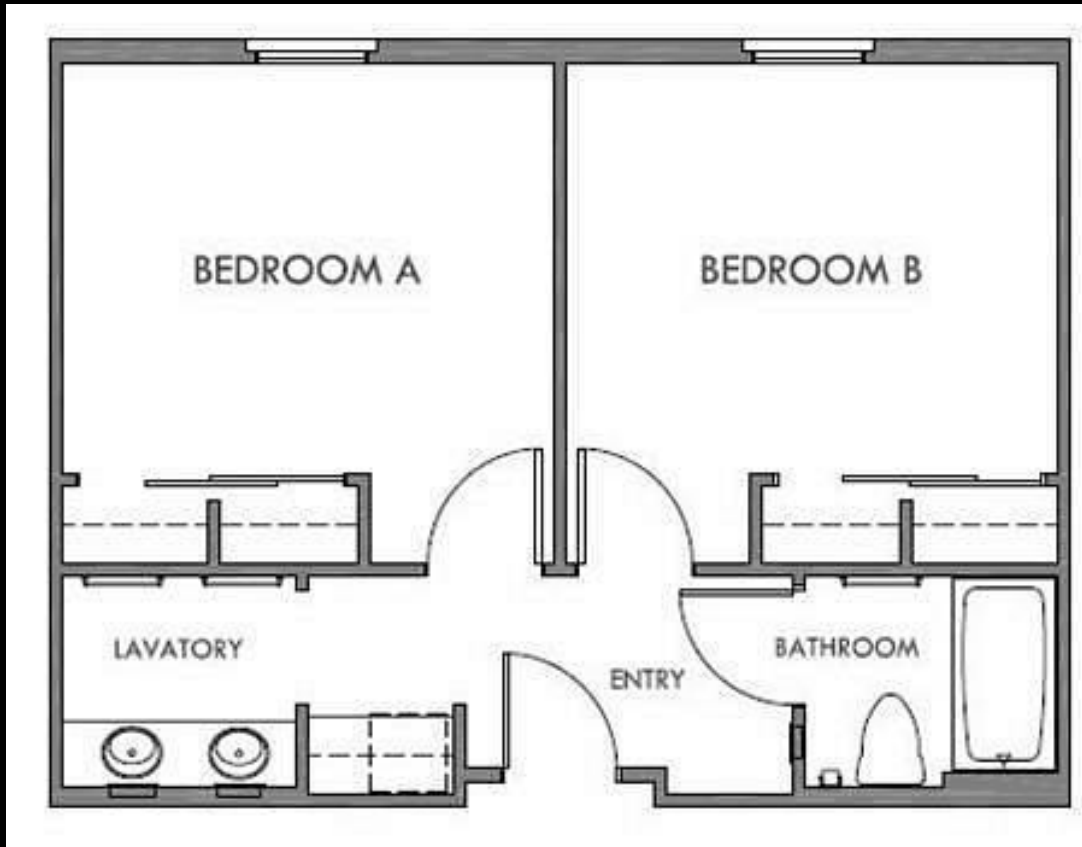
CSU Smoke & Tobacco Policy



Marijuana is **NOT** allowed on campus. Do **NOT** bring, smoke, or eat it anywhere on campus.

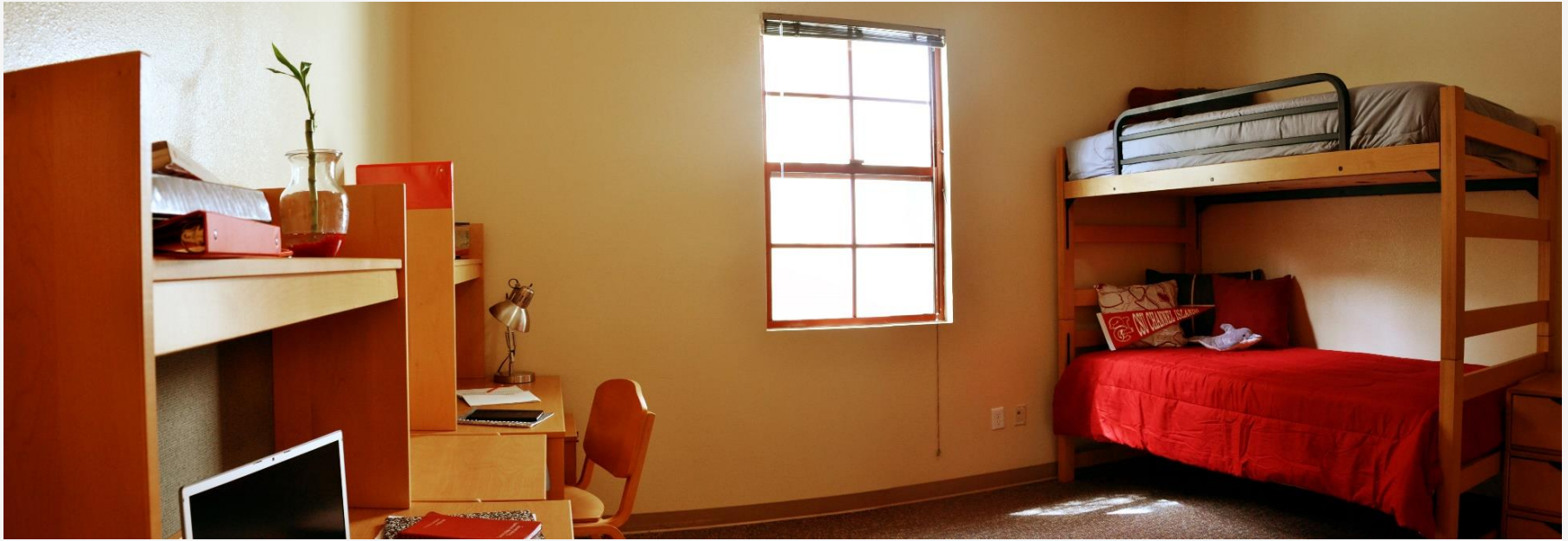
- ❖ Possession of a valid medical marijuana card does **NOT** permit possession or use of marijuana on University property.
 - ❖ Violations are serious. Students may be removed from housing for possession/use of marijuana on campus.
- ❖ CSUCI is a recipient of Federal financial aid funds. Title IV, Part A, Safe and Drug-Free Schools, and Communities Act, does not permit possession or use of marijuana on campus.

Accommodations – Santa Cruz



- ❖ Traditional, suite style village with single occupancy for Fall 2020
- ❖ Twin XL bed & mattress, desk, bookshelf, filing cabinet, drawers, & chair
- ❖ One cube-fridge is provided per bedroom, no additional appliances
- ❖ Shared bathroom*
- ❖ Lounge areas, community kitchen, exercise room, dance room, art room, music rooms, study rooms, computer lab.

**Single occupancy for Fall 2020 with private restroom*



Measurements

❖ *Bedroom Dimensions (approximate):*

- ❖ Two-bedroom suite: 12'7" X 10'8"
- ❖ One-bedroom suite: 14'3" X 10'

❖ *Furniture Dimensions (approximate):*

- ❖ Extra long twin bed & mattress: 3'2" X 7'1"
- ❖ Desk & bookshelf: 42" (L) X 24" (D) X 54" (H)
- ❖ File cabinet (fits under desk): 17" X 24" X 26"
- ❖ Under bed stackable drawers (3 per resident): 26" X 24" X 10.5"

❖ *Square Footage (approximate):*

- ❖ Two-bedroom suite: 477 - 574 square feet
- ❖ One-bedroom suite: 254 square feet



Important Administrative Info

❖ **Communication:**

- ❖ All important information communicated via email

❖ **Housing Eligibility and Assignments:**

- ❖ Must be registered in 9 or more units by July 12 (Freshmen) and July 29 (Transfers) to retain room assignment
- ❖ Single occupancy bedrooms in all Villages, most incoming students will be assigned to Santa Cruz Village (*Frosh*) or Anacapa Village (*Transfers*)
- ❖ Confirm roommate requests due by July 1 through the Student Housing application portal
- ❖ One roommate requests or invites another student to be their roommate, and the other roommate must accept the request to become roommates



Important Administrative Info

The screenshot shows a student portal interface with several sections. A search bar at the top is labeled 'Search for Classes'. Below it are sections for 'Holds' (No Holds.), 'To Do List' (No To Do's.), 'Milestones' (Math/Quant. Reasoning Status, Written Communication Status, Details), 'Enrollment Dates', and 'Finances'. The 'Finances' section is expanded to show 'My Account' (Account Inquiry, Enroll In Direct Deposit) and 'Financial Aid' (View Financial Aid, Accept/Decline Awards). At the bottom of the 'Finances' section is a dropdown menu with 'other financial...' and a double arrow icon. Two large blue arrows point from the text on the right to the 'To Do List' and 'Financial Aid' sections.

❖ **Financial Aid:**

- ❖ Refer to your **myCI To Do List** for submission to Financial Aid.
- ❖ If you intend to use student loans and or parent plus loans, be sure to complete online loan counseling and master promissory note as soon as possible after accepting the award to avoid delays in loan funding.
- ❖ Financial aid must fund by August 18 to cover Housing fees. If it does not fund in time, personal out-of-pocket payment must be made until financial aid is funded.

- ❖ **Account must be paid in full, or first Housing installment payment paid, by August 18.**

Important Administrative Info

Payments:

- ❖ The housing application fee and deposit MUST be paid through the Student Housing application, NOT in myCI
 - ❖ Future housing and other university fee payments can be made electronically via myCI student portal or parent portal
- ❖ Housing Installment Payment Plan (HIPP) are offered each semester for \$33
 - ❖ Fall HIPP dates: August 18, September 18, & October 18

Waiting List:

- ❖ Applicants who submit an application after our priority deadline of June 30, will be accommodated if space is available determined prior to move-in or shortly thereafter



ALL FALL PAYMENTS DUE:

August

18th

Facility Information

We are committed to sustainability and look for students to reduce – reuse – recycle, and refuse!

- Fans are available for rent. Air-conditioning units are not permitted.
 - Community kitchens are available by appointment. Rooms are not set up for cooking – meal plan is designed to meet most meal needs.
 - No additional appliances may be brought into Housing.
-

Fan Rentals

WHERE: SANTA CRUZ
VILLAGE OFFICE

\$7.50/semester (Charged to student
account)





Social Distancing Protocol

**Do not enter this building
if you have a cough or fever**

Only resident students and designated University personnel should be on the CSUCI campus.
All events and meetings in this building are canceled until further notice.

If you enter this building, you must:

- Maintain a minimum six-foot distance from one another
- Follow all signs, marking and posted occupancy restrictions for social distancing
- Sneeze and cough into a cloth or tissue or, if not available, use your elbow
- Do not shake hands or engage in any unnecessary physical contact
- CDC and CDPH recommend that everyone wear a cloth face covering

This facility uses additional measures to protect public health including:

- Cleaning and disinfecting common areas at least daily
- Disinfects all payment portals, pens, and styluses after each use
- Disinfecting all high-contact surfaces frequently
- Soap and water for handwashing are available in each restroom
- Hand sanitizers are available in publicly accessible areas and near entrances
- Disinfectants and related supplies are available to all designated employees upon request
- Non-designated employees should work from home and not be in this building

Questions or comments about this protocol may be directed to Peer Gerber, Director of Environmental, Health and Safety at 805-437-8847 or e-mail peer.gerber@csuci.edu

Changes During COVID-19



Building Closed Do Not Enter

This building is closed to all personnel.
If there is a health, safety, or security concern, please call University Police at 805-437-8444.

In case of emergency, Dial 911.

Learn more about CSUCI response to COVID-19 at:

<https://www.csuci.edu/news/campus-updates/covid19.htm>

1. First-year students assigned to Santa Cruz & Santa Rosa
2. Double Rate in Santa Rosa and Santa Cruz
3. Face coverings outside room will likely be required
4. May require COVID-19 testing at Move-in
5. Guests may not be permitted
6. Some isolation space has been set up as needed
7. Virtual programming, services, and connection
8. May need to prioritize who can receive housing if demand exceeds capacity.

Ways we are preparing for your students

ALL COMMUNITY SPACES CLOSED

PLEASE STAY IN YOUR PERSONAL RESIDENCE AS MUCH AS POSSIBLE

OBSERVE SOCIAL DISTANCING TO FLATTEN THE CURVE

To stay in compliance with Governor Newsom's Stay-at-Home Executive Order, Housing and Residential Education has closed all community spaces for the purpose of social distancing

Thank you for your understanding



HOUSING & RESIDENTIAL EDUCATION
CHANNEL ISLANDS



TO MAINTAIN SOCIAL DISTANCE ONLY ONE PERSON ON ELEVATOR AT A TIME IS RECOMMENDED

FS Main Line (805) 437-8461 E-mail: fsworkcenter@csuci.edu

TO MAINTAIN SOCIAL DISTANCE USE STAIRS IF POSSIBLE

FS Main Line (805) 437-8461 E-mail: fsworkcenter@csuci.edu

YOUR GUIDE TO: **SOCIAL DISTANCING**

WHILE LIVING AT
CSU CHANNEL ISLANDS

EXECUTIVE ORDER N-35-20

WHAT DOES IT MEAN?

ON MARCH 19, 2020, GOVERNOR GAVIN NEWSOM ISSUED THE EXECUTIVE ORDER, DIRECTING ALL INDIVIDUALS TO STAY HOME UNTIL FURTHER NOTICE. IT EXEMPTS ACTIVITY AS NEEDED TO MAINTAIN OPERATIONS OF THE FEDERAL CRITICAL INFRASTRUCTURE SECTORS, CRITICAL GOVERNMENT SERVICES, SCHOOLS, CHILDCARE, AND CONSTRUCTION.

WHAT'S STILL OPEN?

ESSENTIAL SERVICES, SUCH AS: PHARMACIES, GAS STATIONS, GROCERY STORES, BANKS, AND ESSENTIAL STATE AND LOCAL GOVERNMENT FUNCTIONS, WHICH MEANS, HOUSING & RESIDENTIAL EDUCATION IS OPEN TOO!

SOCIAL DISTANCING: DELIBERATELY INCREASING THE PHYSICAL SPACE BETWEEN PEOPLE TO AVOID SPREADING ILLNESS. STAYING AT LEAST SIX FEET AWAY FROM OTHER PEOPLE LESSENS YOUR CHANCES OF CATCHING COVID-19.

DO:

- STAY HOME
- WASH HANDS FOR AT LEAST 20 SECONDS
- USE ALCOHOL-BASED HAND SANITIZER
- COVER YOUR COUGH OR SNEEZE WITH A TISSUE
- CLEAN AND DISINFECT FREQUENTLY TOUCHED OBJECTS AND SURFACES

DON'T:

- SHAKE HANDS
- TOUCH YOUR EYES, NOSE, OR MOUTH
- HAVE VISITORS
- GO TO THE DOCTOR IF YOU AREN'T SICK
- SHARE ITEMS SUCH AS TOWELS OR UTENSILS
- ATTEND LARGE GROUP EVENTS

WANT TO LEARN MORE? CHECK OUT: COVID19.CA.GOV

Important Dates

- **July 1:** Confirm roommate requests in Housing application
- **July 4:** Cancellation deadline for \$100 cancellation fee
- **July 12:** Freshmen must be enrolled in 9 or more units to retain room assignment
- **July 22:** Last day to cancel license without approval; however, \$200 cancellation fee applies
 - NOTE: requests received after July 22 are subject to review and may be approved or denied; if approved, daily license fee penalties will be incurred for each day after July 22 that the cancellation request is received.
- **July 29:** Transfers must be enrolled in 9 or more units to retain room assignment
- **August 7:** Post room assignments (subject to change)
- **August 18:** Payment due date
- **August 17 – 21 (as assigned):** Move in!

All communication is sent via email – check dolphin email at least once a week





@ci_housing

@csuci_rha



CI Housing

Residence Hall Association



@CI_housing

@csuci_rha



CSUCI_HRE



csucihousing



@csuci_rha

Housing Website:

<https://www.csuci.edu/housing/>

CONNECT WITH US



• Virtual Tour:

<https://www.csuci.edu/housing/>

Transportation & Parking Services

- ❖ Parking permits are available for purchase each semester for designated Student Housing (SH) parking lots
 - ❖ Purchase permits online through myCI, link will be visible after housing fees are applied to student account
 - ❖ SH permits are limited & available on a first-come, first-served basis to residents
 - ❖ Parking regulations are enforced at all times – there are NO “no-cite” days
 - ❖ Bus pass, RideMatching carpools, & Zipcar also available
 - ❖ Located in Placer Hall
-





Parent & Supporter Tips

This is an important step for your student – and it's also an important time for you.

- Coach your student through problem solving with roommates, academic problems, and administrative issues. Avoid stepping in to solve concerns for them. Contact us if they are encountering too many roadblocks or if you have concerns.
- Most information you need will be on the website.
- Sign up to receive Parent & Family Programs e-newsletter. Link is on Parent & Family Programs website <https://www.csuci.edu/step/parent-family-resources/>.
- Handwritten notes still mean a lot – so do homemade chocolate chip cookies sent in care packages. 😊

References

- ❖ CI Housing page: <http://www.csuci.edu/housing/>
 - ❖ Fall 2020 COVID-19 Updates: <https://www.csuci.edu/housing/hre-updates/fall-2020-covid-19-updates.htm>
 - ❖ Housing & Residential Education Virtual Services:
<https://www.csuci.edu/housing/connecting-virtually-with-hre.htm>
 - ❖ Housing rates: <http://www.csuci.edu/housing/accommodations-rates/index.htm>
 - ❖ Housing dates: <https://www.csuci.edu/housing/apply/application-dates.htm>
 - ❖ FAQ's: <http://www.csuci.edu/housing/apply/faq.htm>
 - ❖ License agreement: <http://www.csuci.edu/housing/accommodations-rates/license-agreement.htm>
 - ❖ Disability accommodations: https://csuci.qualtrics.com/jfe/form/SV_5AsrIY4QImiOpIj
 - ❖ Resident Handbook: <http://www.csuci.edu/housing/residenthandbook.htm>
 - ❖ Parent & Family Programs: <https://www.csuci.edu/step/parent-family-resources/>
-

The background is a collage of various colored paper scraps in shades of yellow, green, orange, blue, pink, and purple. Each scrap features a large, hand-drawn black question mark. A white circle is partially visible on the right edge. A vertical white line is on the left side.

QUESTIONS?