

# **Data & Donuts:**

## **Student Enrollment, Success and Engagement**

### **2015-16**

Institutional Research, Planning & Effectiveness

**Judy King**  
Data Analyst

**Bob Ngo**  
Senior Analyst

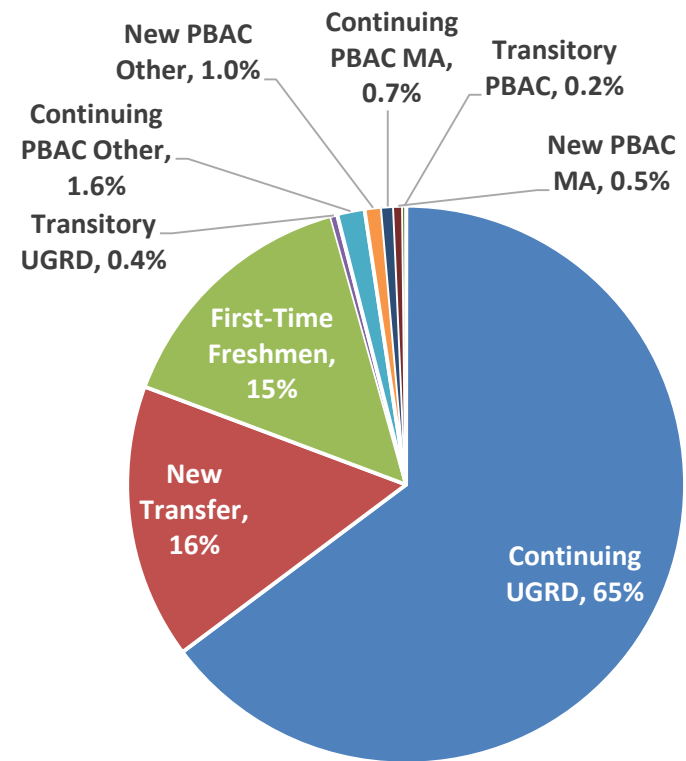
**Michael Bourgeois**  
Director

# Enrollment Trends

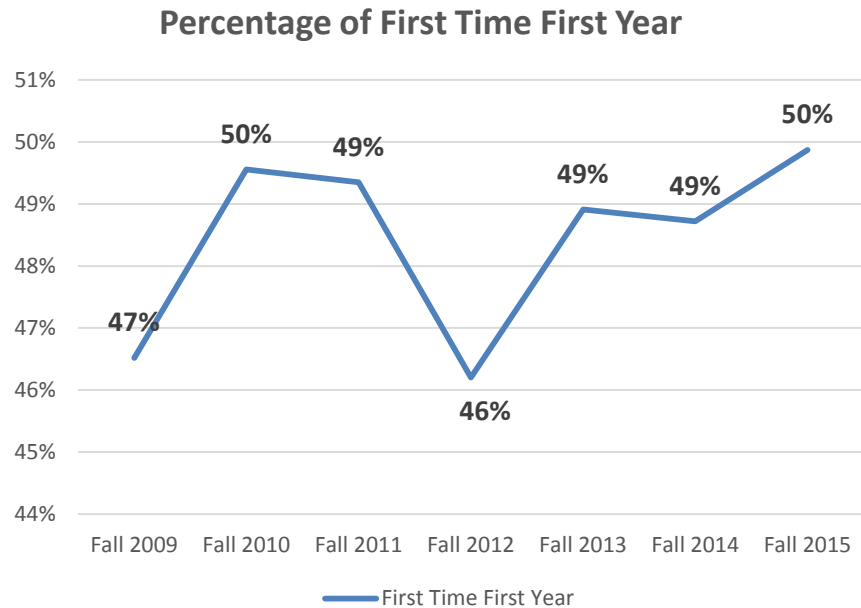


# CI Fall 2015 Total Enrollment by Student Type

Total Enrollment by Student Level (Stateside)		
<b>Undergraduate</b>		
	<b>Headcount</b>	<b>Percent</b>
Continuing UGRD	3993	65%
New Transfer	997	16%
First-Time Freshmen	905	15%
Transitory UGRD	23	0.4%
<b>Total Undergraduate</b>	<b>5918</b>	<b>96%</b>
<b>Postbaccalaureate</b>		
	<b>Headcount</b>	<b>Percent</b>
Continuing PBAC Other	101	1.6%
New PBAC Other	62	1.0%
Continuing PBAC MA	43	0.7%
New PBAC MA	32	0.5%
Transitory PBAC	11	0.2%
<b>Total Postbaccalaureate</b>	<b>249</b>	<b>4.0%</b>
<b>Campus Total</b>	<b>6,167</b>	

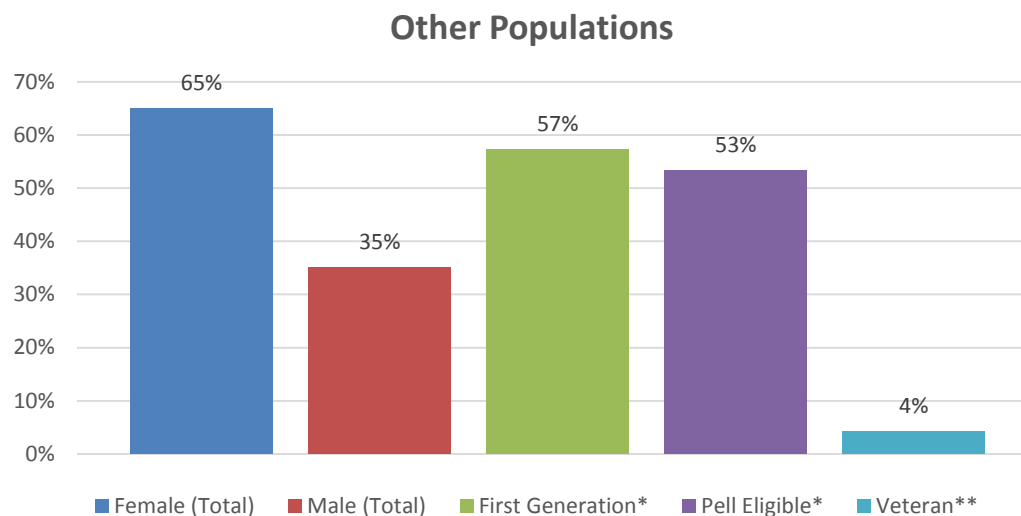


# Undergraduate Enrollment by Admit Type Fall 2009-Fall 2015



Total Enrollment by Student Level (Stateside)							
	Fall 2009	Fall 2010	Fall 2011	Fall 2012	Fall 2013	Fall 2014	Fall 2015
Freshmen	1663	1778	1966	2173	2409	2739	2940
	47%	50%	49%	46%	49%	49%	50%
Transfer	1912	1810	2018	2530	2516	2883	2955
	53%	50%	51%	54%	51%	51%	50%

# Other Demographic Groups



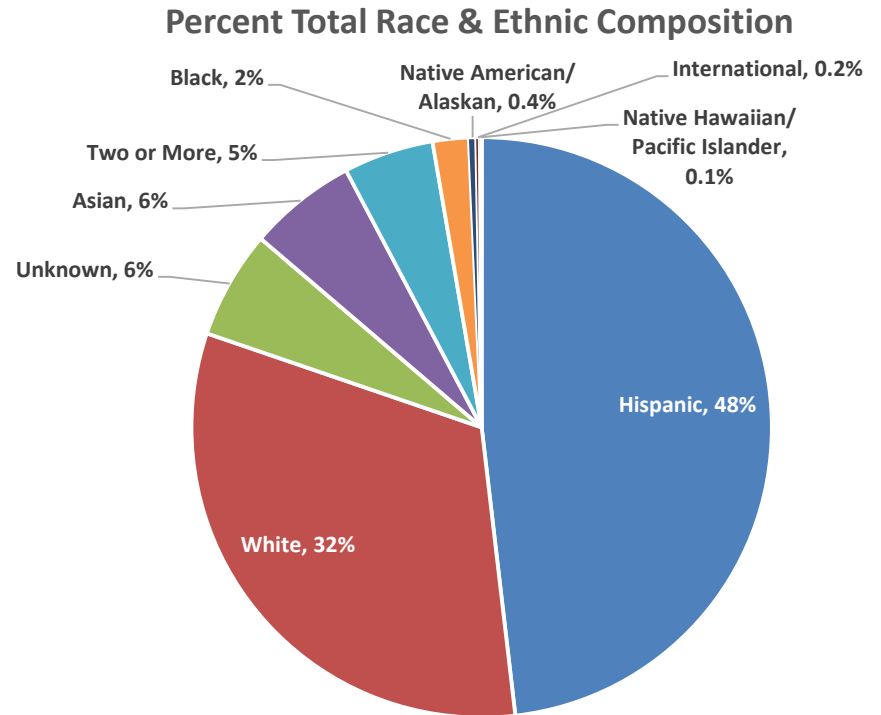
Other Populations	Count	Percent
Female (Total)	4027	65%
Male (Total)	2140	35%
First Generation*	3394	57%
Pell Eligible*	3159	53%
Veteran**	263	4%

\*Undergrad Only

\*\*Includes Dependents

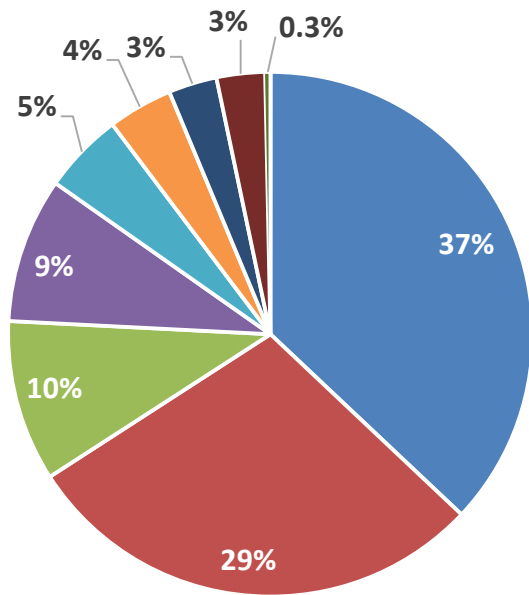
# Fall 2015 Total Enrollment by Ethnicity

Total Race and Ethnic Composition	Count	Percent
Hispanic	2966	48%
White	1980	32%
Unknown	378	6%
Asian	354	6%
Two or More	307	5%
Black	143	2%
Native American/ Alaskan	23	0.4%
International	11	0.2%
Native Hawaiian/ Pacific Islander	5	0.1%

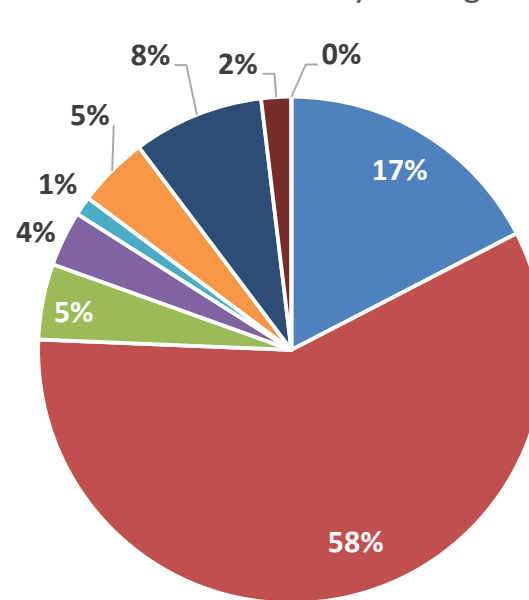


# New Undergraduate by Geographic Origin

First Time Freshmen County of Origin



New Transfer County of Origin



- Los Angeles
- Ventura
- Monterey & North
- Orange & Riverside
- San Bernardino
- San Diego & Imperial
- Santa Barbara
- Kern & San Luis Obispo
- Other

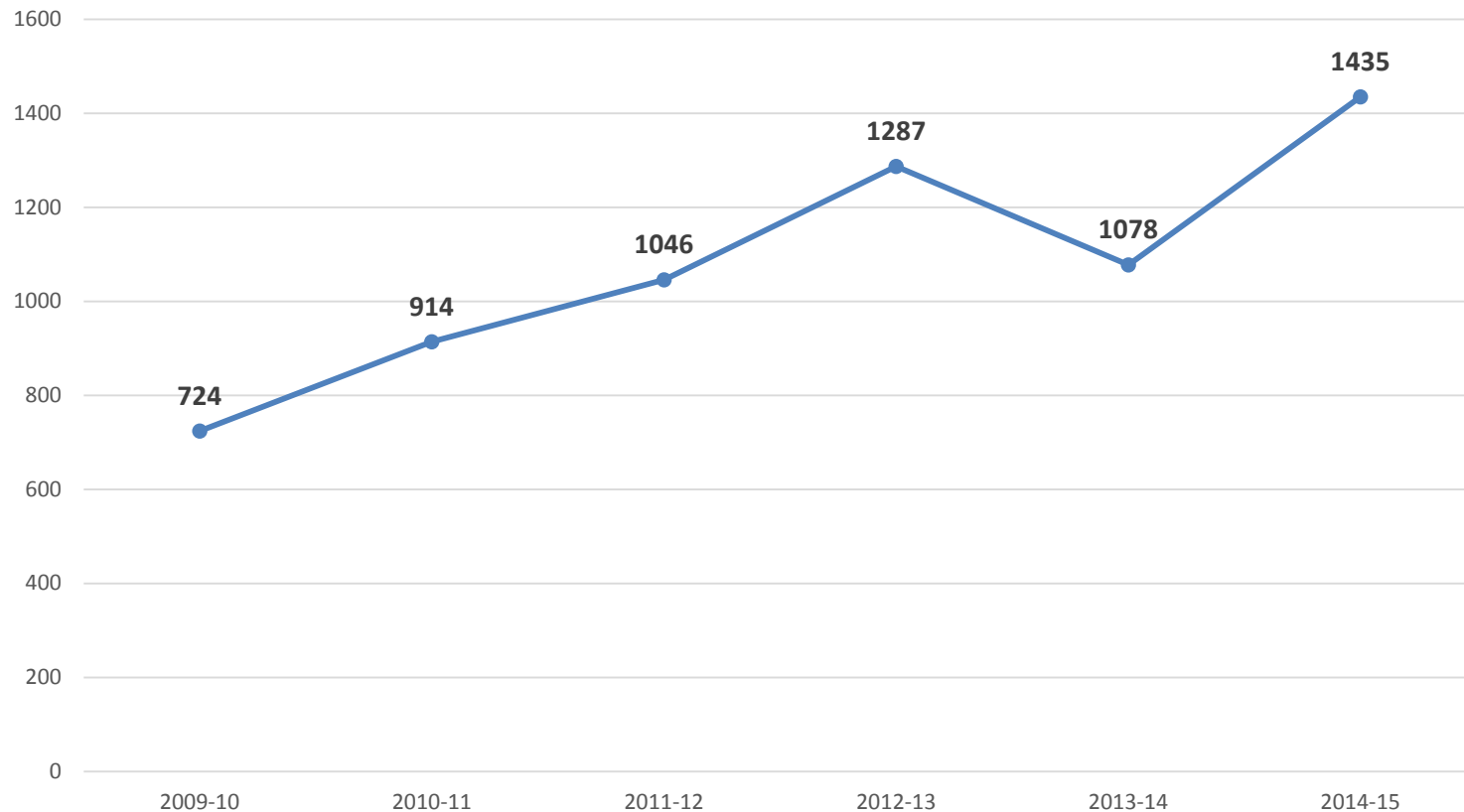
# Undergraduate Student Success





# CY 2014-15 Degrees Conferred

## Undergraduate Degrees Conferred

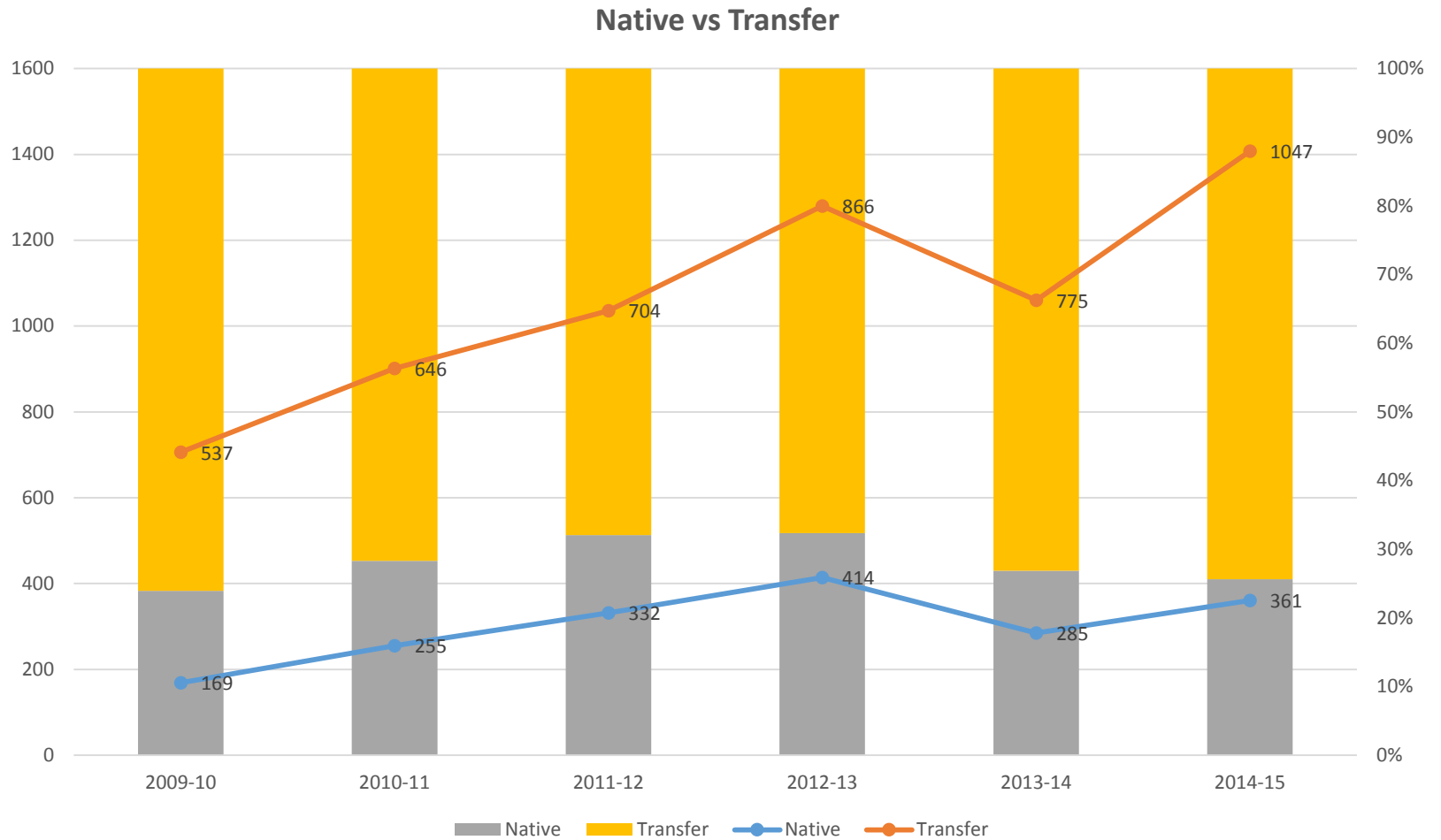


# Undergraduate Degrees by Major

Undergraduate Degrees by Major		
	Frequency	Percent
PSYCHOLOGY	260	18%
BUSINESS ADMINISTRATION	206	14%
COMMUNICATION, COMMUNICATION STUDIES	133	9%
LIBERAL STUDIES	105	7%
BIOLOGY	102	7%
SOCIOLOGY / APPLIED SOCIOLOGY	98	7%
ART	83	6%
NURSING, PRE-LICENSURE	78	5%
ENGLISH	42	3%
POLITICAL SCIENCE / GOVERNMENT	39	3%
HISTORY	32	2%
EARLY CHILDHOOD STUDIES	29	2%
ENVIRONMENTAL SCIENCE	29	2%
NURSING (RN-TO-NURSING DEGREE)	29	2%
ECONOMICS	27	2%
COMPUTER SCIENCE	22	2%
CHEMISTRY	21	1%
PERFORMING ARTS	21	1%
SPANISH	20	1%
MATHEMATICS	19	1%
INFORMATION TECHNOLOGY	17	1%
ANTHROPOLOGY	15	1%
APPLIED PHYSICS	4	< 1%
CHICANO / LATINO STUDIES	4	< 1%
<b>Total</b>	<b>1435</b>	

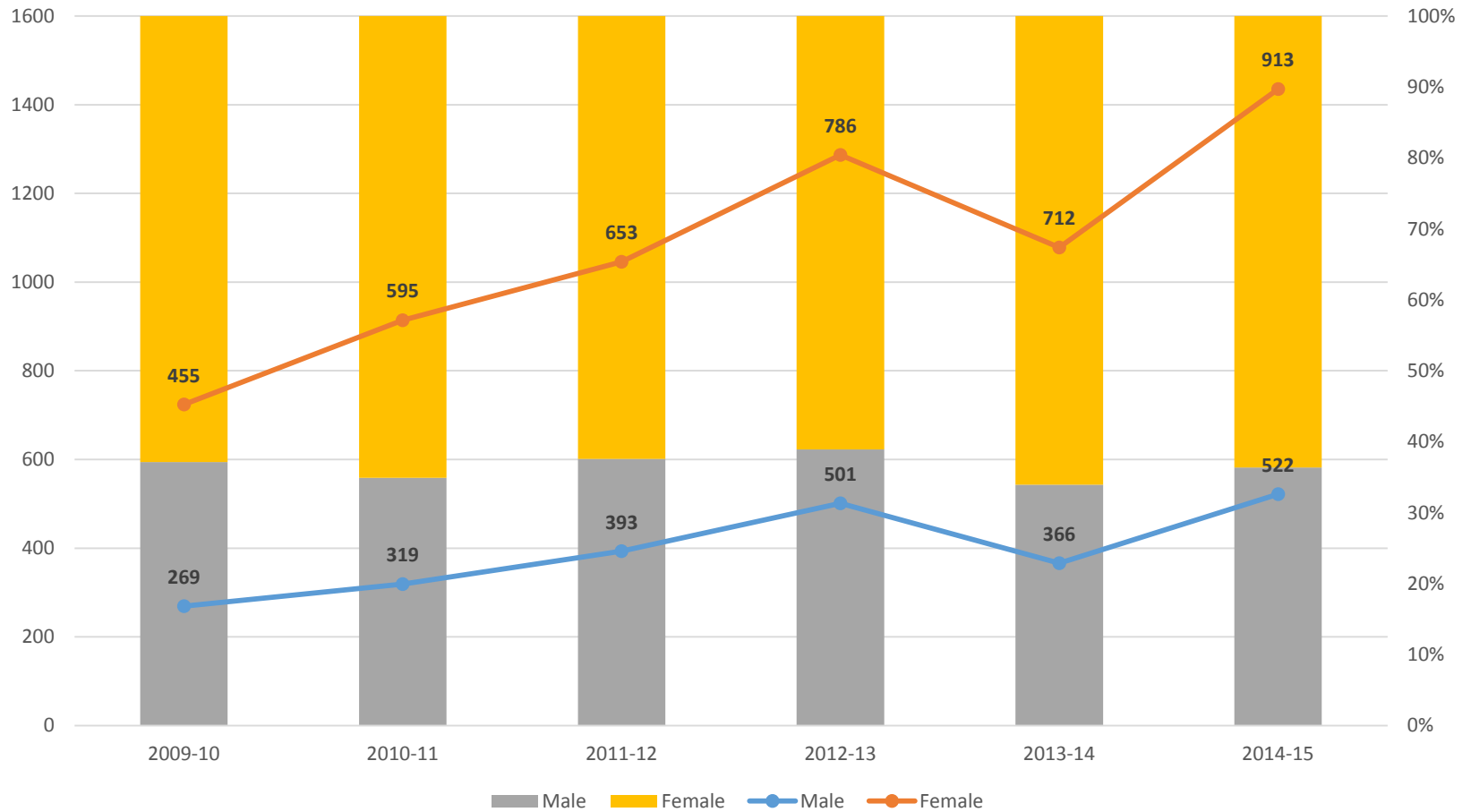


# UGRD Degrees Conferred, by App Type



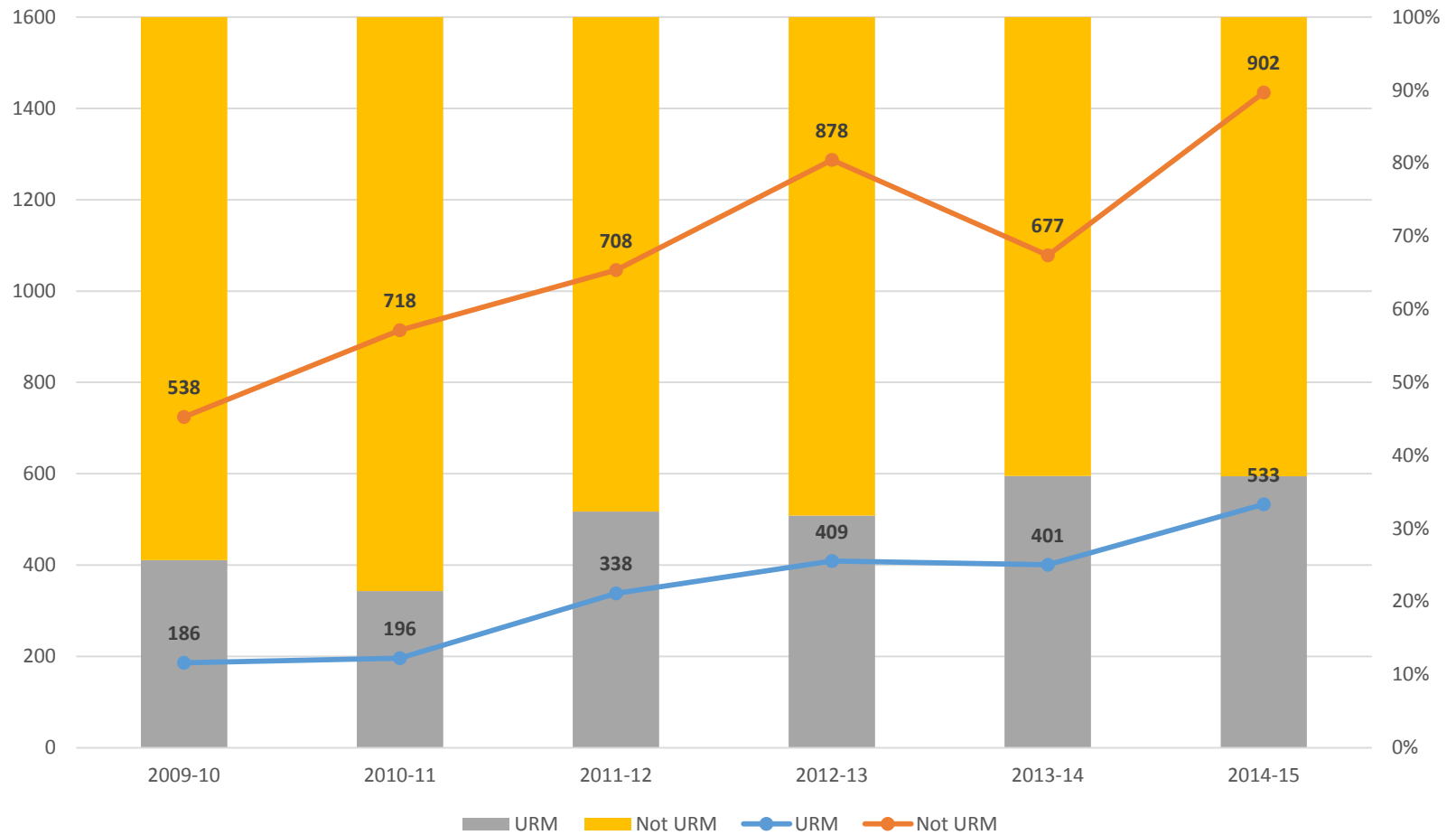
# UGRD Degrees Conferred, by Gender

Male vs Female



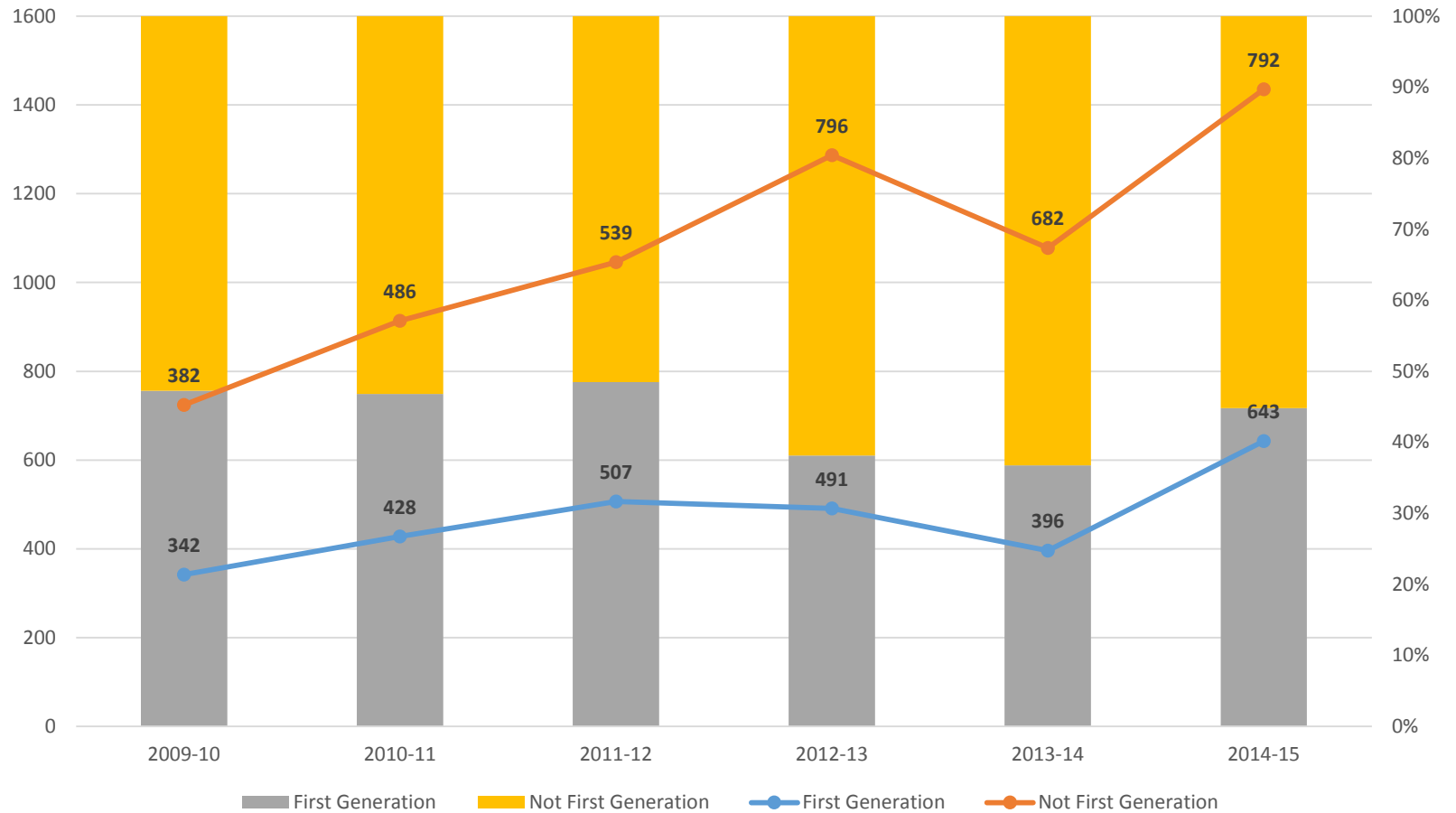
# Degrees Conferred, by URM

Under Represented Minorities vs Not URM



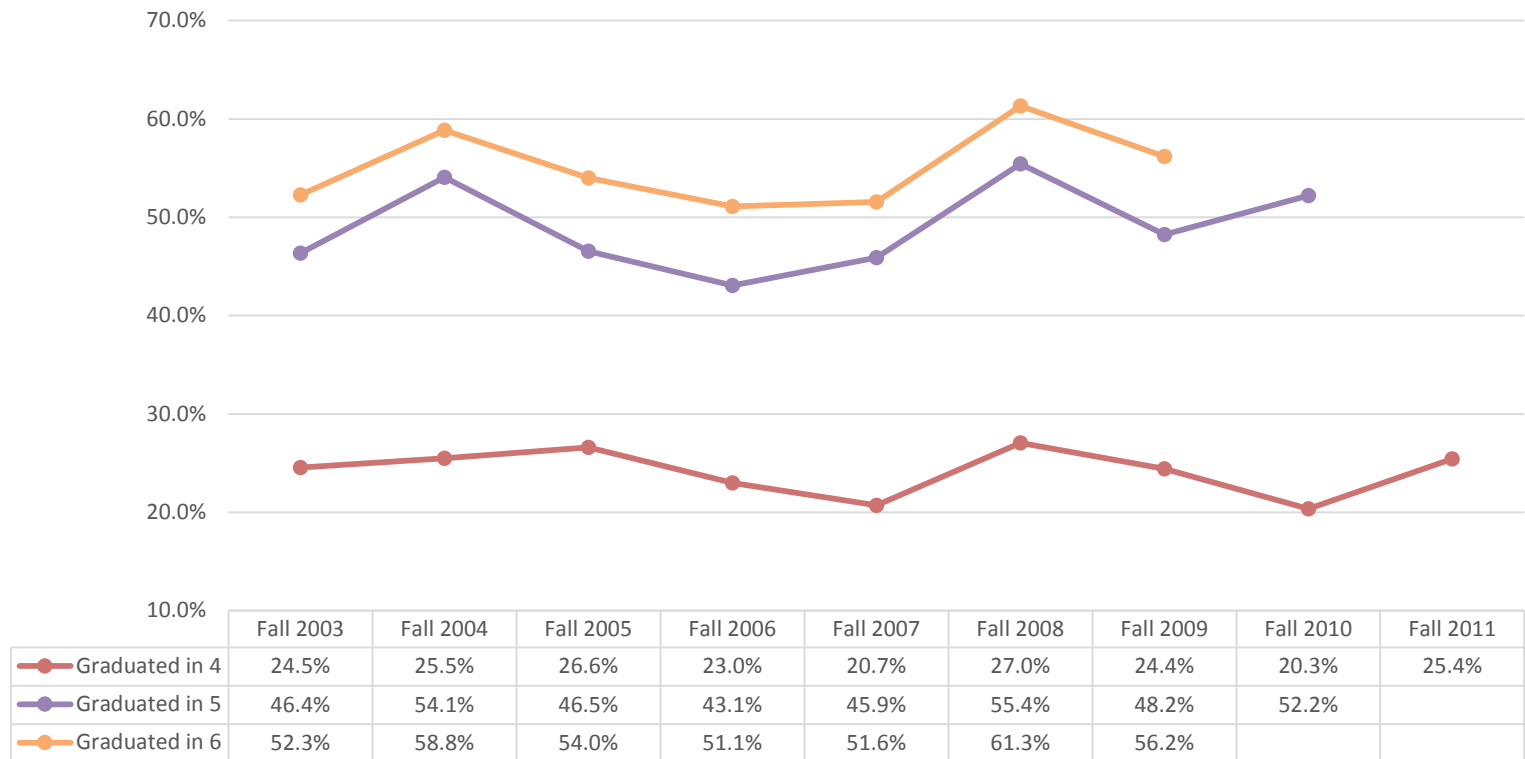
# Degrees Conferred, by First Generation Status

## First Generation Students vs Not First Generation Students



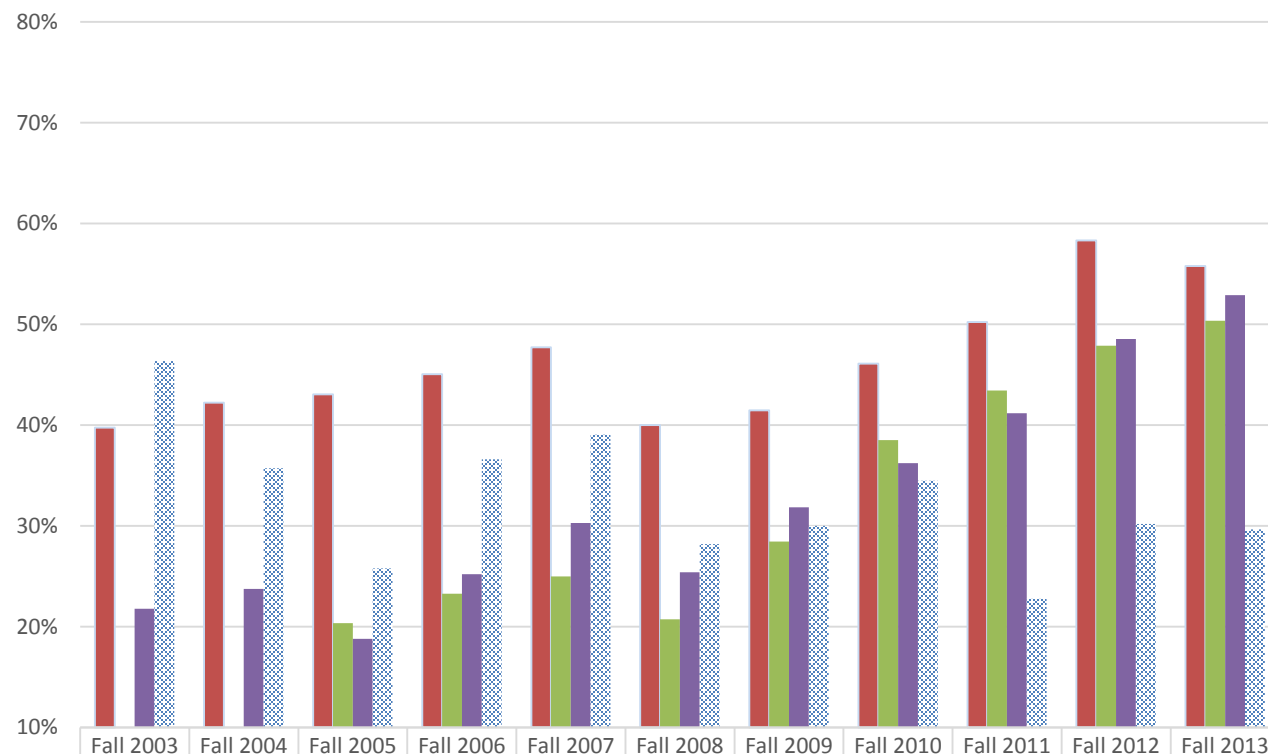
# First Time Freshmen Graduation Rates

First-Time, Full Time Freshmen Graduation Rates



# FTF Cohort Characteristics

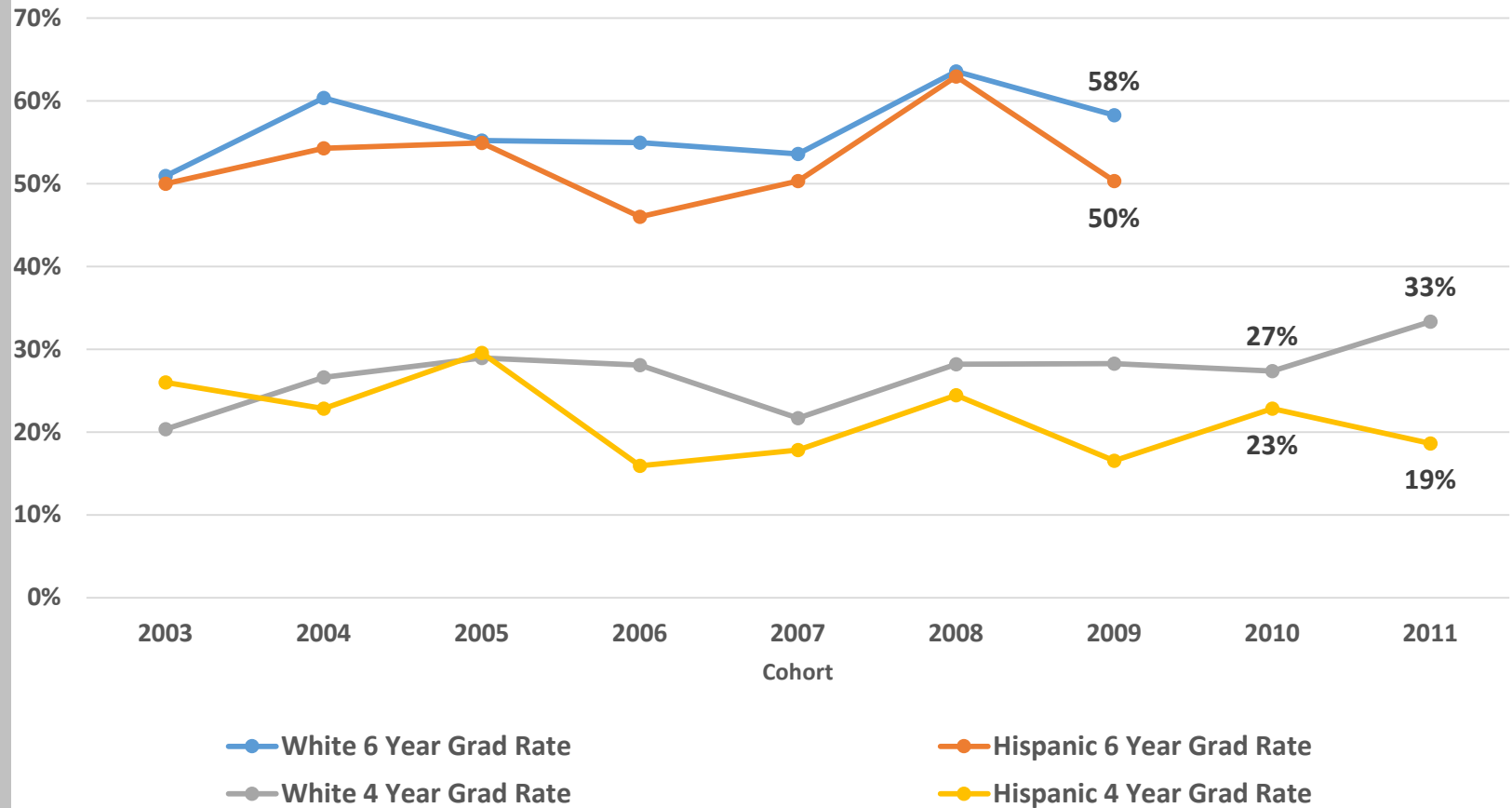
First-Time, Full Time Underrepresented Enrollment



	Fall 2003	Fall 2004	Fall 2005	Fall 2006	Fall 2007	Fall 2008	Fall 2009	Fall 2010	Fall 2011	Fall 2012	Fall 2013
■ First Generation	40%	42%	43%	45%	48%	40%	41%	46%	50%	58%	56%
■ Pell Eligible			20%	23%	25%	21%	28%	39%	43%	48%	50%
■ Hispanic	21.8%	23.8%	18.8%	25.2%	30.3%	25.4%	31.9%	36.2%	41.2%	48.5%	52.9%
■ Proficient in Neither Math Nor English	46.4%	35.7%	25.8%	36.6%	39.1%	28.2%	30.0%	34.5%	22.8%	30.2%	29.6%

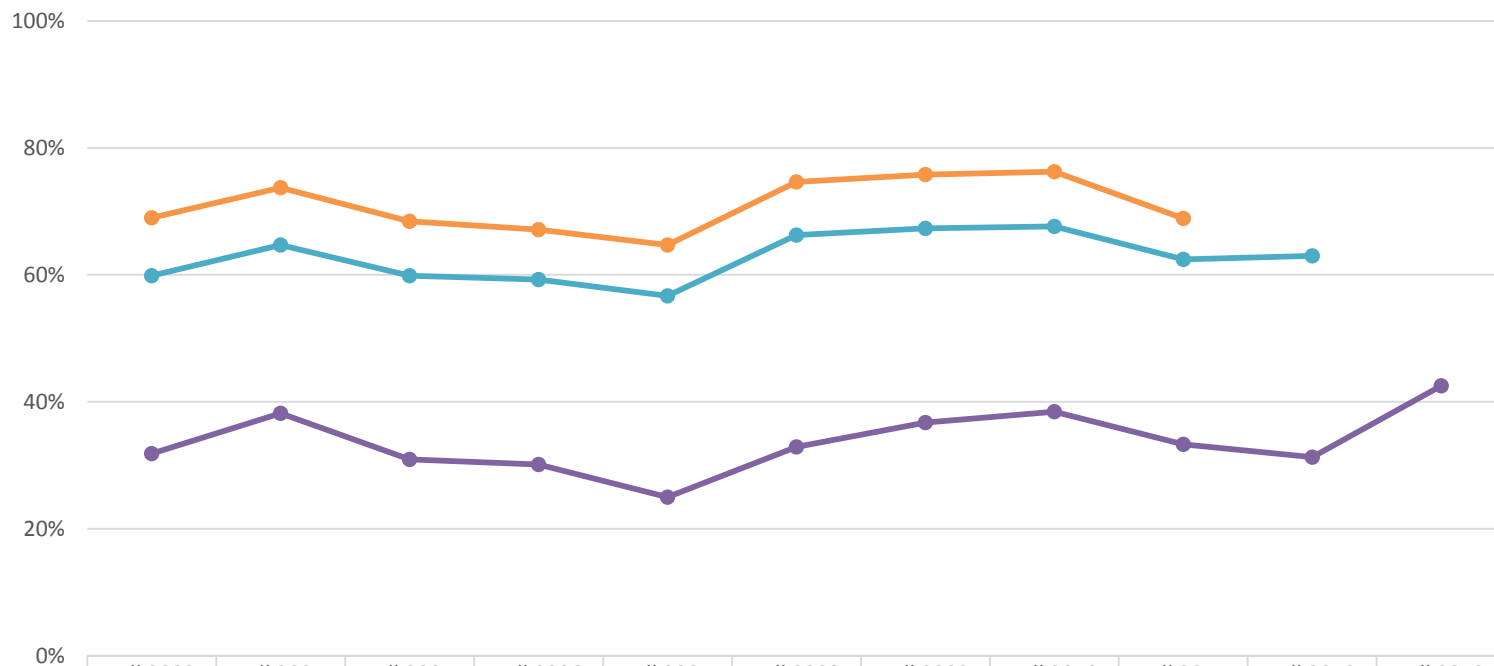


# FTF Grad Rate White vs Hispanic Students



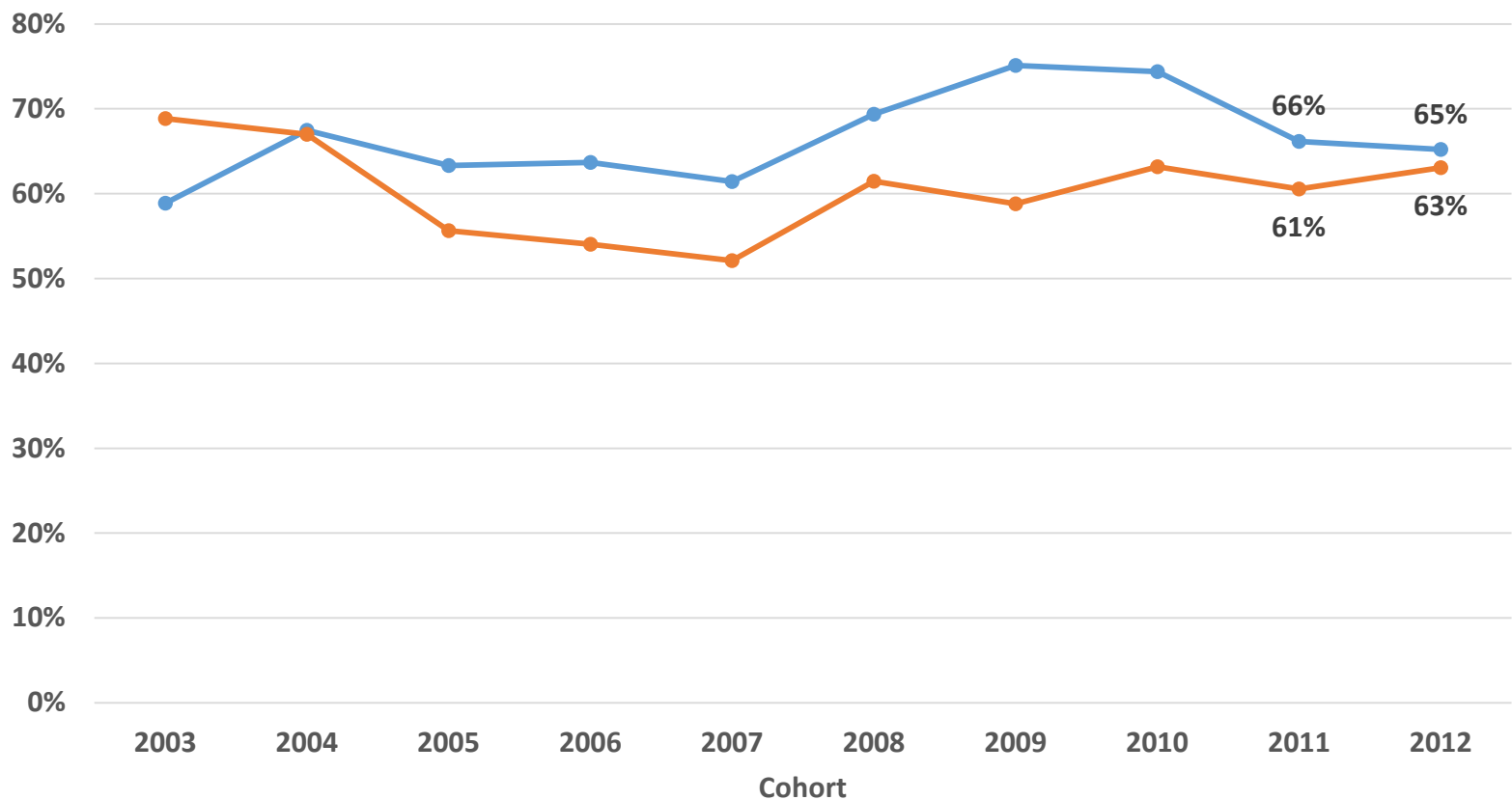
# Transfer Graduation Rates

## NEW TRANSFER CONTINUATION AND GRADUATION: ALL STUDENTS



	Fall 2003	Fall 2004	Fall 2005	Fall 2006	Fall 2007	Fall 2008	Fall 2009	Fall 2010	Fall 2011	Fall 2012	Fall 2013
Grad in 2nd Year	31.8%	38.2%	31.0%	30.2%	25.0%	32.9%	36.8%	38.5%	33.3%	31.3%	42.5%
Grad in 3rd Year	59.9%	64.7%	59.9%	59.3%	56.7%	66.3%	67.3%	67.6%	62.5%	63.0%	
Grad in 4th Year	69.0%	73.7%	68.4%	67.1%	64.7%	74.7%	75.8%	76.2%	68.9%		

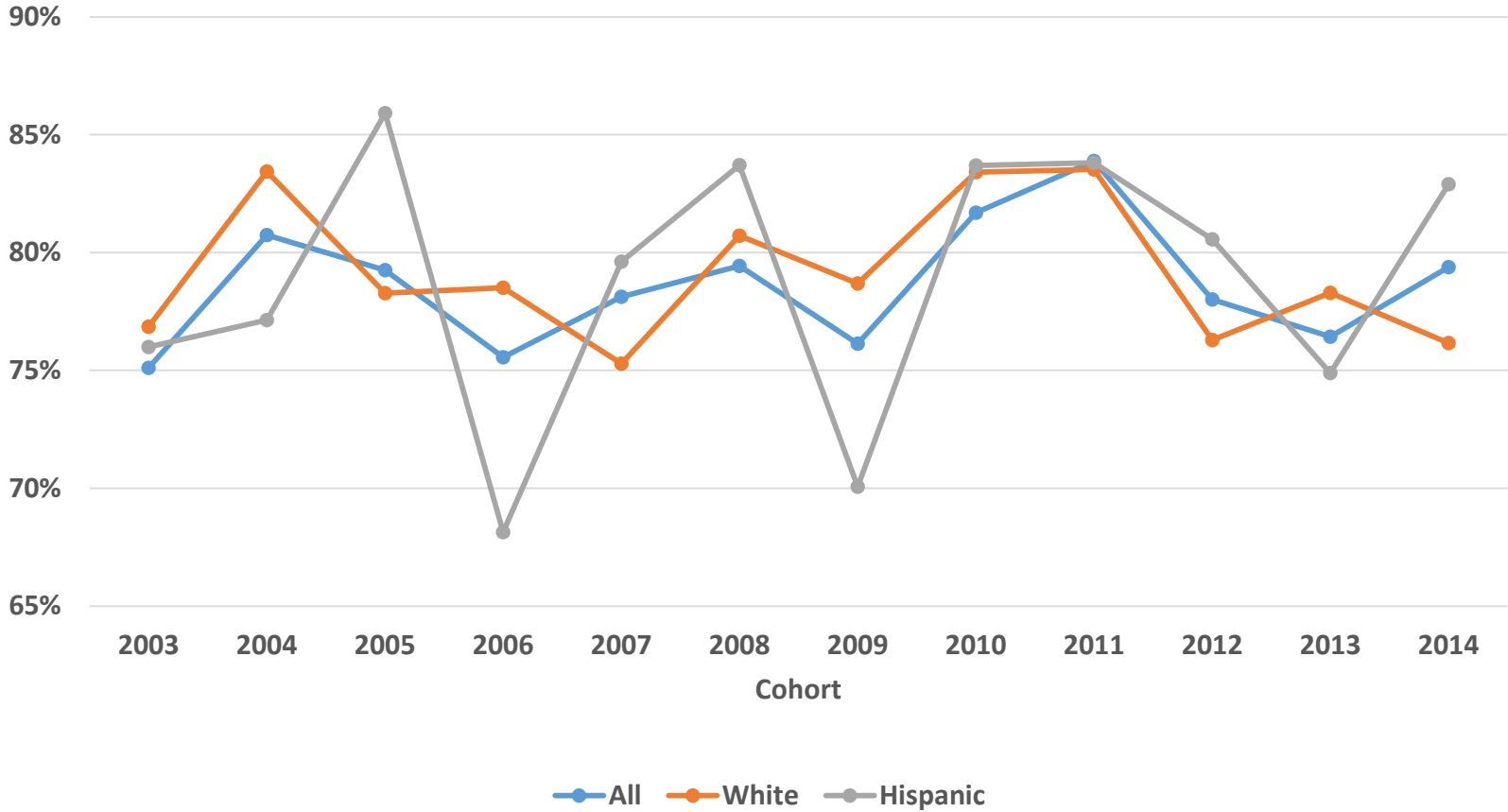
# Transfer 3 year Grad Rates White v Hispanic Students



White 3 year Grad Rate      Hispanic 3 Year Grad Rate



# FTF 1 Year Retention Rate



# Fall 2014 FTF Cohort 1 Year Retention

	Fall 2014 Cohort	Enrolled Fall 2015	%
All	929	731	79%
<b>Gender</b>			
Female	655	524	80%
Male	274	207	76%
<b>Pell Eligible</b>			
Y	526	407	77%
N	311	250	80%
Unknown	92	74	80%
<b>First Generation</b>			
First Generation	559	440	79%
Not First Generation	327	260	80%
Unknown	43	31	72%
<b>Ethnicity</b>			
White	247	192	78%
Black/African American	41	30	73%
Native American/Alaskan	5	3	60%
Asian	57	47	82%
Pacific Islander/Native Hawaiian	1	0	0%
Two or More	37	22	59%
Hispanic	511	413	81%
Unknown	29	24	83%
International	1	0	0%

